



Welcome to Reception 2022-23



Most resources referred to in this presentation are available on the school website.



What you'll find in this presentation ...

- Who will be working with your child
- How we will promote and support the children's well-being
- Understand routines in Reception
- A glimpse into the year ahead
- Expectations for homework
- Some resources that can be accessed to support your child's learning
- An outline of the provision for the Prime Areas of Learning



Who works in Reception?

Miss Jones
Mrs Stott
Mrs Collings



Well-being

What we're doing...	Why we're doing it...
Developing personal, social and emotional skills	Supporting emotions: encouraging interactions and sharing experiences
Promoting physical development	Promoting physical health to support their well-being
Intervention	Small groups will allow us to focus on children's barriers to learning



A week in Reception

Monday	Morning routine <i>This is where children will check in with how they are feeling, before completing a self-register</i>	Family Time <i>Children split into two family groups, The Hedgehogs and The Badgers</i>	Snack time	Enhanced Provision <i>Children will be able to choose whether to move their learning on in our indoor or outdoor environment</i>	Literacy	Lunch	Physical adult led session <i>This occurs during part of lunch time</i>	Register Followed by handwriting	Mastering Number	Enhanced provision	Rapid Recall of Maths Facts	End of day story
Tuesday		Phonics	Snack time	Enhanced Provision	Literacy	Lunch	Physical adult led session	Register Followed by handwriting	Mastering Number	Enhanced provision	Rapid Recall of Maths Facts	End of day story
Wednesday		Phonics	Snack time	Enhanced Provision	Literacy	Lunch	Physical adult led session	Register Followed by handwriting	Mastering Number	Enhanced provision	Rapid Recall of Maths Facts	End of day story
Thursday		Phonics	Snack time	Enhanced Provision	Literacy	Lunch	Physical adult led session	Register Followed by handwriting	Mastering Number	Enhanced provision	Rapid Recall of Maths Facts	End of day story
Friday		Phonics	Snack time	Enhanced Provision	Literacy	Lunch	Physical adult led session	Register Followed by handwriting	Family Time	Enhanced provision	Rapid Recall of Maths Facts	End of day story

What we will cover in these subjects is available in the 'Parent Curriculum Overview' on the parents area of the school website. ('Curriculum Overviews and Homework')



The year ahead:

These are just a few things to expect over the course of the year ...

- Termly parent meeting
- Enrichment activities for children
- Opportunities for you to come into school and share in the children's learning
 - Statutory Assessment at the end of the year. Children will be assessed against 17 Early Learning Goals across seven areas of learning. Information will be provided later in the year.



What about homework?

Homework activities can be found on the Parent Curriculum Overview

Home reading	<ul style="list-style-type: none">• Please record home comments / messages in the reading diary. <i>(Reading in school is recorded separately.)</i>• Please listen to them read but also take time to read to them.
Number club	This will be sent home on Friday after it has been completed in school in order to correct errors for the next week's club. These will start on Friday 14th October.
Spellings	Spellings will be sent home on Friday and will be tested on the following Thursday. These will start on Friday 30th September.
Enrichment tasks	These are based on the subjects the children are learning about and can be found on the Parent Curriculum Overview.



Online resources:

www.ictgames.com

<http://www.ruthmiskin.com/en/parents/>

<https://www.bbc.co.uk/cbeebies>

<https://www.purplemash.com/#tab/pm-home>

Further resources may be shared as the year continues.



What are children aiming for in Reception?

- Age Related Expectations (ARE) are the standard that pupils are expected to be working at by the end of the year.
- Target sheets for reading, writing (English) and maths are available on our school website.
 - Maths - <https://www.woodendprimaryschool.co.uk/maths>
 - Reading & writing - <https://www.woodendprimaryschool.co.uk/english>
- Children's journeys will look different and we will share these details with you individually.



The Early Years Curriculum

We follow the Early Years statutory framework. This tells us what to teach our children and when they are expected to reach specific milestones in their learning.

The current framework, which was revised in September last year, places children in the following bands according to their age;

- Birth to Three
- 3-4 year olds
- Reception aged children.

More information on the curriculum requirements can be found online by searching for New Early Years Statutory framework.



Prime Areas of learning in the EYFS curriculum

Personal, Social, Emotional Development

- Self-Regulation
- Managing Self
- Building Relationships

Communication and Language

- Listening, Attention and Understanding.
- Speaking

Physical Development

- Gross motor (larger muscle) skills
- Fine motor (smaller muscle) skills



Specific Areas of learning in the EYFS curriculum

Literacy

- Comprehension
- Word Reading
- Writing

Mathematical Development

- Number
- Numerical Patterns
- Shape, Space and Measure

Understanding the World

- Past and Present
- People, Cultures and Communities
- The Natural World

Expressive Arts and Design

- Creating with Materials
- Being Imaginative and Expressive



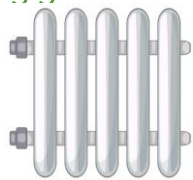
Supporting the Prime Areas of Learning – Communication and Language

Communication and Language is split into two areas.

1. Listening, Attention and Understanding.
2. Speaking

The adults in the early years environment play a vital role in providing communication friendly spaces.

Staff aim to be...



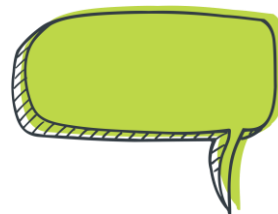
Radiators

Staff continually strive to emit new language and vocabulary throughout the day



Magnets

Staff intend to encourage children to be drawn to different language hotspots within our classroom



Conversationalists

Staff will model conversation skills with children



Supporting the Prime Areas of Learning – Personal, Social and Emotional Development

PSED is split into three areas.

1. Self-regulation
2. Managing Self
3. Building Relationships

Staff in Reception will take time to build relationships with the children in Reception. Adults will 'tune in' to your child, to help them feel 'known' and understood, respected and valued.



Supporting the Prime Areas of Learning – Physical Development

Physical Development is split into two areas.

1. Gross Motor
2. Fine Motor

Staff aim for children to be as active as possible and we plan for an environment that offers variety and challenge.





We would appreciate your support ...

- Ensure your child is in school with us.
- Promote your child's independence!
Encourage your child to get themselves dressed in the morning.
- Get to know what the expectations are for your child this year.
- If you have any questions, please contact the school via email.



Thank you for your
continued support.