

Dear Parents,

As the changeable weather continues, and children are unwell please do look at the advice on the back page of this newsletter about when children can attend school.


Thank you to all families who responded to the survey about parental engagement. We received responses from more than half of our families.

Of all the responses that we received...

- 96% felt they knew how their children are progressing
- 98% felt they knew how to support their children with learning

This is really positive. We have also found that celebration and family learning events have been increasingly well attended in the last two years. This is more positive than the attendance at parent workshops held previously. We appreciate your partnership in these sessions and your responses to these events as they help us to develop our future provisions.


If there are other subject areas that you would like advice and guidance on please do not hesitate to contact school via email.

Miss Sharma 

Mon 27.01.25	Rec, Y1 & Y2 Online Parent Session
Mon 27.01.25	Y3 & Y4 Online Parent Session
Wed 29.01.25	Chinese New Year lunch - see below
Wed 29.01.25	Y2 Family Learning
Thurs 06.02.25	Y4 Ukulele Performance - 9am - see text message sent 21.01.25
Fri 07.02.25	Y4 visit to Kingswood
w/b 10.02.25	Parents' Evenings - more information to follow
Wed 12.02.25	Y2 Recorder Performance - 9am - see text message sent 21.01.25
Fri 14.02.25	Break-up for half-term
Mon 24.02.25	Return to school
Wed 12.03.25	Y1 visit to Dudley Zoo - see email sent 07.01.25
Wed 12.03.25	Reception - NCMP with school nurses - more information to follow
Thurs 20.03.25	Y3 visit to Lunt Roman Fort - more information to follow
Wed 26.03.25	Y2 visit to Black Country Living Museum - see email 07.01.25
Fri 11.04.24	Break-up for Easter break
Mon 28.04.25	Return to school
Thurs 01.05.25	Inset Day

**Leave of Absence :**

If completing a Leave of Absence form and you believe that it is for exceptional circumstances that should not be put forward for a fixed penalty notice, please do not hand into school until all the paperwork is available to support your request.



**Winter 2025 issue of Raring2go! Magazine**

Take a look at the latest issue of Raring2go! magazine for lots of ideas of where to go and what to do as a family from now until the end of March by clicking this link: <https://magazines.raring2go.co.uk/wolverhampton/winter2025/>

Please ensure that all coats, uniform and lunchboxes are all named. We have a number of items in lost property (by the office) that do not have names in.



WOLVERHAMPTON & SOUTH STAFFORDSHIRE

A WHOLE YEAR OF WILD

SAFARI PARK ANNUAL

FROM £78

UNLIMITED ADMISSION ★ AMAZING DISCOUNTS ★ UNLIMITED SAFARI ENTRY

MAGAZINE & WEBSITE THE GO-TO GUIDE FOR YOU AND YOUR CHILD

raring2go.co.uk WINTER 2025

## Bad Weather

**Conditions** - if, due to adverse weather conditions, the decision is made to close the school, notifications can be found on local radio stations and the Wolverhampton Today page on Facebook. You will also receive a text message from school. Could you please ensure that we have your up to date contact details.



## Tax-Free Childcare

If you are a family who currently use WoodE's breakfast/after school club, or would like to use the facility, then you may be interested in the following information. Wood End Primary School is signed up for the Tax-Free Childcare scheme which is open to all parents of children under 12 (or under 17 if disabled) to help with the cost of childcare. You can get up to £500 every 3 months (up to £2,000 a year) for each of your children to help with the costs of childcare. This goes up to £1,000 every 3 months if a child is disabled (up to £4,000 a year).



If you've already registered, you can [sign in to your childcare account](#).

If you get Tax-Free Childcare, you'll set up an online childcare account for your child. For every £8 you pay into this account, the government will pay in £2 to use to pay your provider.

You can get Tax-Free Childcare at the same time as 15 or 30 hours free childcare if you're eligible for both.

You can use it to pay for [approved childcare](#), for example:

- childminders, nurseries and nannies
- after school clubs and play schemes

Please see below link for more information: <https://www.gov.uk/tax-free-childcare>

If you would like to apply, you must open a Tax-Free Childcare account online. If you want to find out what help you might be entitled to try the government's childcare calculator.

## Change of Menu

### Wednesday 29th January - Chinese New Year

We will be celebrating with a special menu. If you would like your child to have this menu, please pay on your schoolcomms account.

There will be no charge for Reception, Year 1 and Year 2 pupils and those that receive Free School Meals. This will be the only menu available on this day.

#### Menu

Sweet and Sour Chicken Balls

Rice

Or

Singapore Noodles

Chinese Style Fruit Salad

Ice Cream



## NHS Pharmacy First Service

Did you know that the NHS Pharmacy First Service enables children and adults to get convenient access to healthcare advice and treatment where appropriate, for seven common conditions without the potential delay of having to wait for a GP appointment? Accessing the service may mean that we can help children feel better and get back to school as quickly as possible, as well as supporting parents/carers to also get better if they are unwell with one of the conditions covered under the service.

There is no need to make an appointment; parents or carers can pop into their local Boots pharmacy with their child and ask for help under the service.

Support for the following conditions can be accessed under the service, free of charge (unless NHS prescription charges apply):

<u>Common condition</u>	<u>Patient eligibility</u>
Earache	1 to 17 years
Impetigo	1 year and over
Infected insect bites and stings	1 year and over
Sore throats	5 years and over
Sinusitis	12 years and over
Uncomplicated urinary tract	Women 16 to 64 years
Shingles	18 years and over

# SEND SURGERY

WOLVERHAMPTON INFORMATION, ADVICE AND SUPPORT SERVICE  
OFFERS A SEND SURGERY FOR PARENTS, CARERS AND YOUNG PEOPLE AT

CHERRY STREET SEND AND SENSORY HUB

CHERRY STREET  
WOLVERHAMPTON  
WV3 0QW



THURSDAY 9 JANUARY: 9.30AM- 1.00PM

TUESDAY 21 JANUARY: 1.00PM- 4.30PM

THURSDAY 6 FEBRUARY 9.30AM- 1.00PM

TUESDAY 25 FEBRUARY: 1.00PM- 4.30PM



Our impartial and knowledgeable team can offer advice on topics such as:

- SEND Support in mainstream schools – the Graduated Approach
- Preparing for school meetings
- Education, Health and Care needs assessment process
- Draft EHCPs
- EHCP Annual Review process
- Suspensions and modified timetables

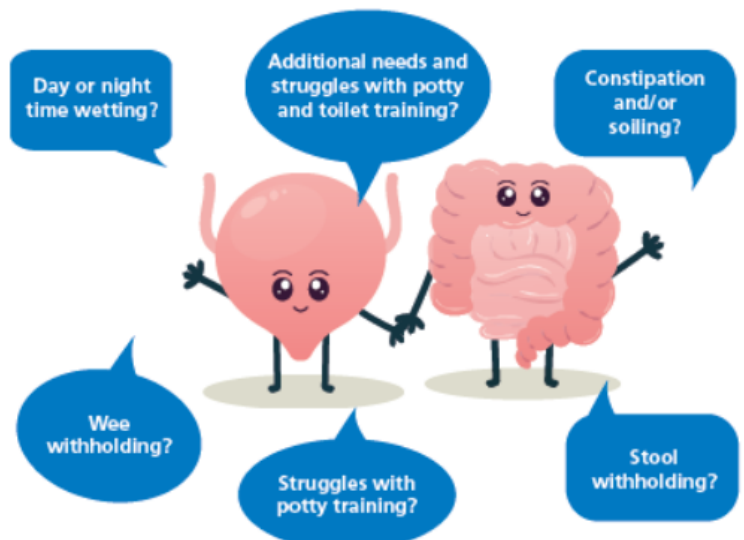
# Notices

We will post any information that we receive from outside agencies here.



**NHS**  
The Royal Wolverhampton  
NHS Trust

## Do you or your child or young person have?



Do not suffer in silence



Speak to your Health Visitor, School Nurse or GP for advice and support.

Additional Resources



**B** Bladder & Bowel UK

# Is my child too ill for school?

**It can be tricky deciding whether or not to keep your child off school, nursery or playgroup when they're unwell.**

There are government guidelines for schools and nurseries about [managing specific infectious diseases at GOV.UK](#). These say when children should be kept off school and when they shouldn't.

If you do keep your child at home, it's important to phone the school or nursery on the first day. Let them know that your child won't be in and give them the reason.

If your child is well enough to go to school but has an infection that could be passed on, such as a cold sore or head lice, let their teacher know.

## Other illnesses

Follow this advice for other illnesses:

### Coughs and colds

It's fine to send your child to school with a minor [cough](#) or [common cold](#). But if they have a fever, keep them off school until the fever goes.

Encourage your child to throw away any used tissues and to wash their hands regularly.

### High temperature

If your child has a [high temperature](#), keep them off school until it goes away.

### Chickenpox

If your child has [chickenpox](#), keep them off school until all the spots have crusted over.

This is usually about 5 days after the spots first appeared.

### Cold sores

There's no need to keep your child off school if they have a [cold sore](#).

Encourage them not to touch the blister or kiss anyone while they have the cold sore, or to share things like cups and towels.

### **Absence Reporting**

Please notify school on the first day of absence by 8:45 or as soon as practically possible. Do this by calling the school office, leaving an answerphone message or email if necessary.

As per our attendance policy for September 2023, we now request that parents contact school on each day of the child's absence.

If school does not receive any notification of a child's absence, Mrs Farley will call parents to ascertain the reason for the absence.